



# Franklands Village Housing Association

## Lettings Brochure

2019



Franklands Village Housing Association  
The Estate Office, Franklands Village  
Haywards Heath  
West Sussex RH16 3RS  
Telephone: 01444 413771  
Email: [enquiries@fvha.org.uk](mailto:enquiries@fvha.org.uk)  
Internet: <http://www.fvha.org.uk>

## **Welcome To Franklands Village.**

The purpose of the brochure is to provide you with information regarding the types of property available within Franklands Village. This brochure should be read in conjunction with the Associations Lettings Policy “Access to Housing” which is included with the application form pack.

All the dimensions detailed within the floor plans of the properties are approximate measurements. Additional information has been included for applicants unfamiliar with the area.

### **Table of Contents**

About Franklands Village	3
Studio Flats within Franklands Village	4
One Person, One Bedroom Flats within Franklands Village	5
One Person, One Bedroom Flats within Franklands Village	6
One Bedroom Flats within Franklands Village	7
Two Bedroom Flats within Franklands Village	8
Houses within Franklands Village	9
Village Store	10
Other Facilities within the Village	11
Franklands Village Layout Plan	12
Useful Addresses and Telephone Numbers - Schools & Colleges, Local Recreation facilities.	13
Useful Addresses and Telephone Numbers - Doctors & Dentists	14
Useful Addresses and Telephone Numbers	15

## **ABOUT FRANKLANDS VILLAGE**

Franklands Village was built in the 1930's in a lovely part of Sussex about a mile from Haywards Heath Town Centre and comprises 277 properties in total. The accommodation within the Village is varied and includes:

32 Studio Flats (Self contained with own kitchen and bath/shower room);  
74 One Bedroom flats;  
84 Two bedroom flats  
87 Semi-detached Houses;  
1 terrace of 4 houses (2 x 2 bedroom & 2 x 3 bedroom)

Each property has its own garden/or use of a communal garden

There are also two sheltered housing complexes within Franklands Village:

**Pennington House** managed by Southern Housing Group, 9 Denne Parade, Horsham, West Sussex RH12 1JW Tel: 01403 269131;

**Charles Bennett Court** managed by Hanover Housing Association, 1 Bridge Close, Staines, Middlesex TW18 4TB Tel: 01784 446100.

Franklands Village is located east of the town centre off the A272 within easy reach of the Princess Royal Hospital and is approx 40 Miles from London - 15 Miles from Brighton.

### **Directions:**

Follow the signs for the Hospital from Haywards Heath Town Centre, when you reach the Birch Roundabout - with the Shell Petrol Station in front of you - take the first exit (Frankton Avenue). After approximately 200 yards the road bends to the right and immediately before the bend there is a junction to the left. This is the entrance to Franklands Village. **Please Note:** A ten miles per hour speed limit is in force within the village and speed-humps are in place on all village roads.

### **Village Groups**

Here are some of the Groups that meet in the Village Hall on a regular basis or meet at other venues within the village

Franklands Village Women's Institute

Mid Sussex Local History Group

Pilates

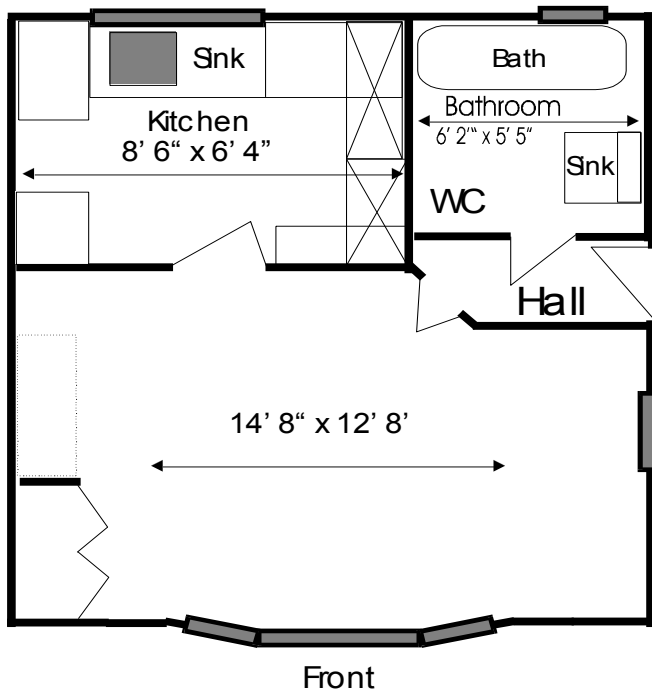
1st Haywards Heath Scout Group - Meet in the Scout Hut

Treetops Nursery (Scout Hut)

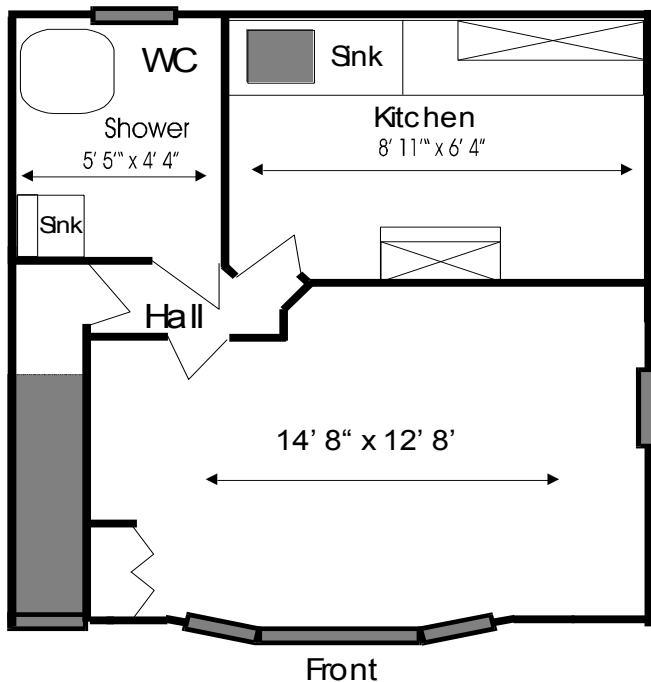
# A Block of Bedsitter Flats within the Village



**Typical Floor Plan**



**Bedsitter Flat Ground Floor**

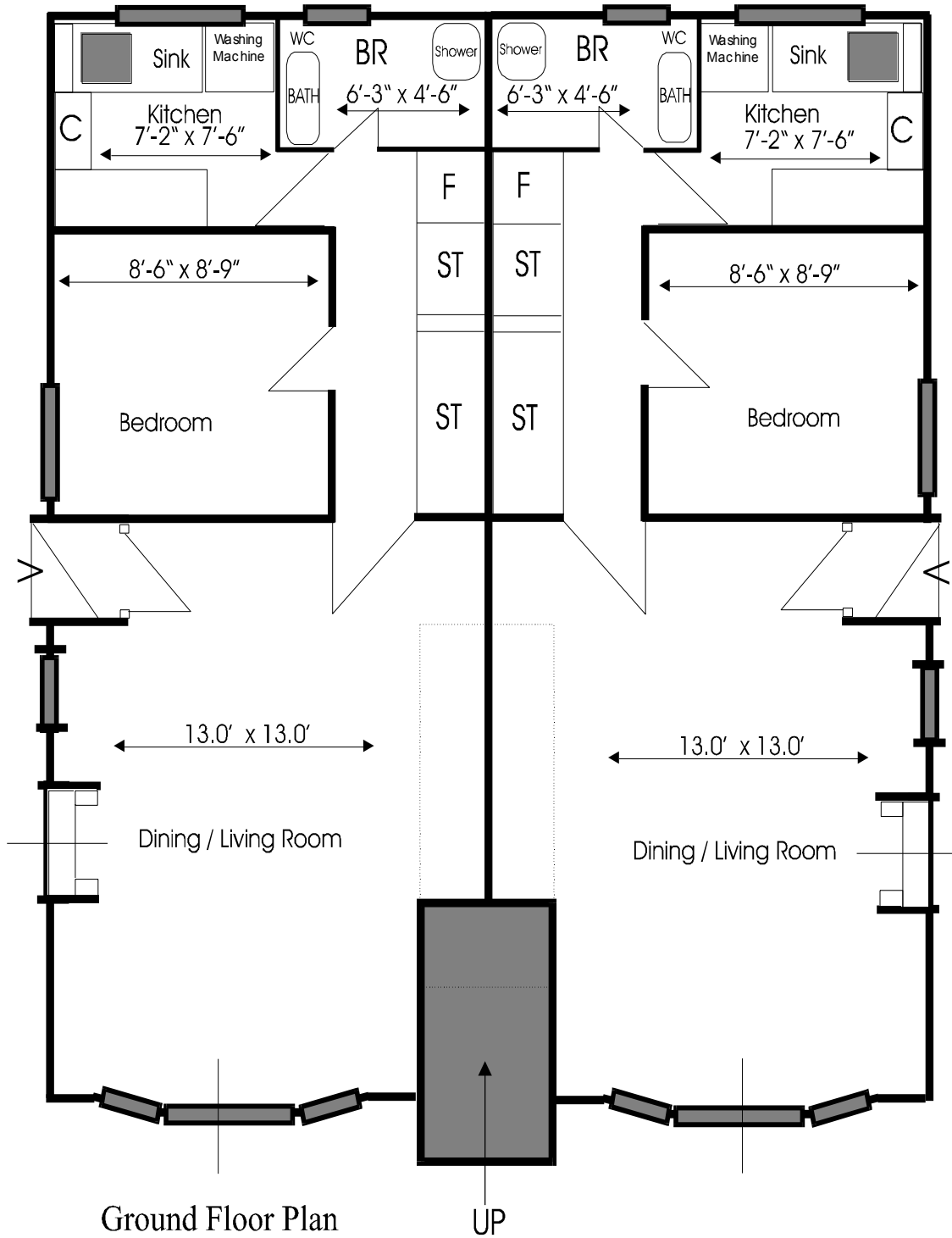


**Bedsitter Flat First Floor**

# A Block of One Person, One Bedroom



Typical Floor Plan

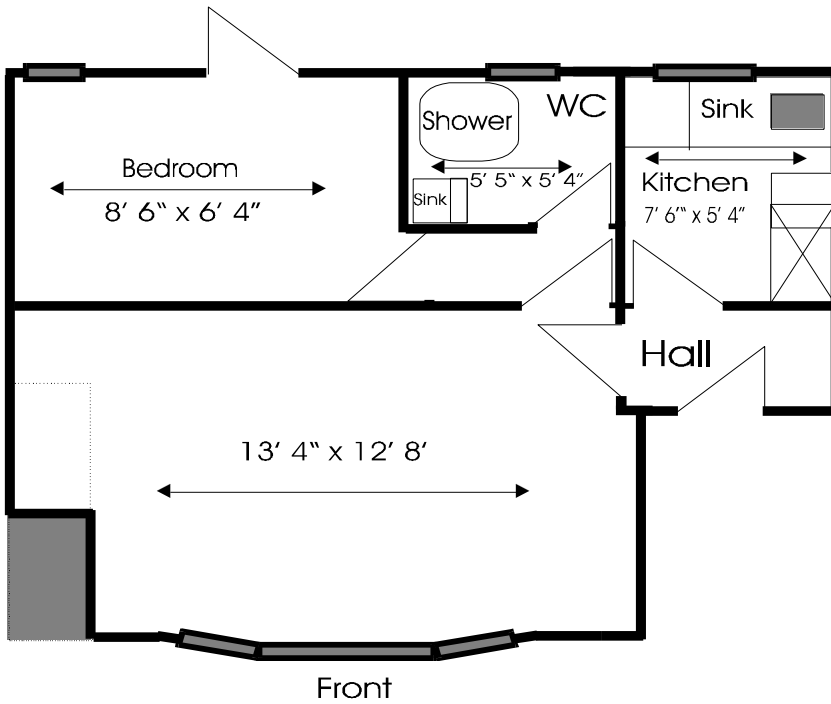


Ground Floor Plan

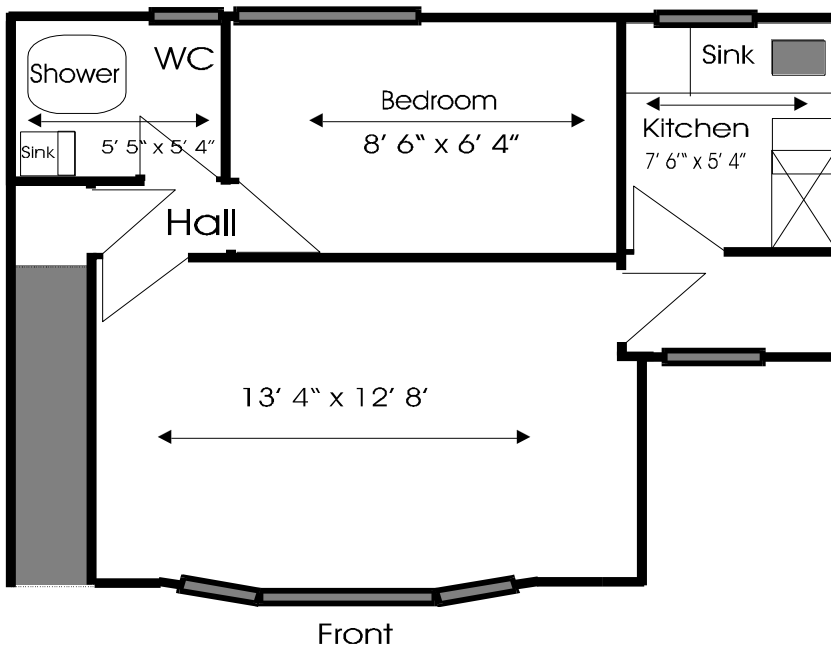
UP

# A Block of One Person, One Bedroom Flats within the Village

Typical Floor Plan



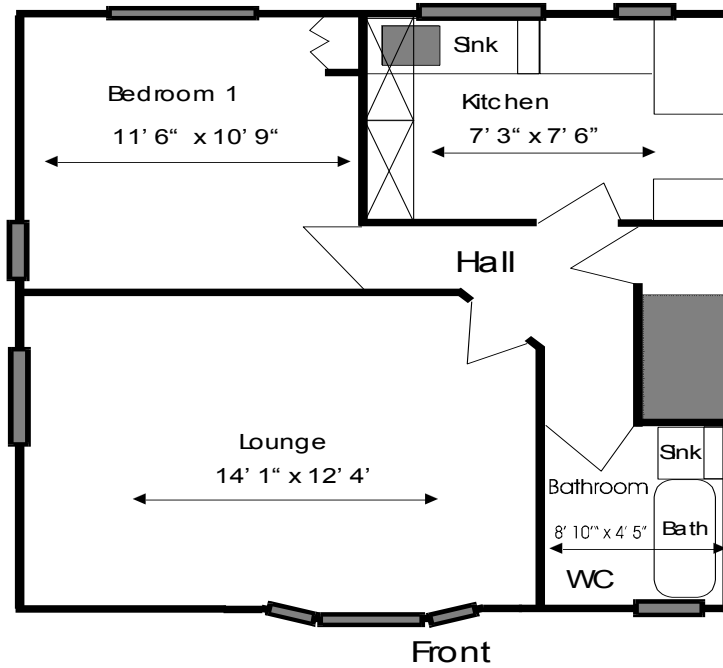
One Person One Bed Flat Ground Floor



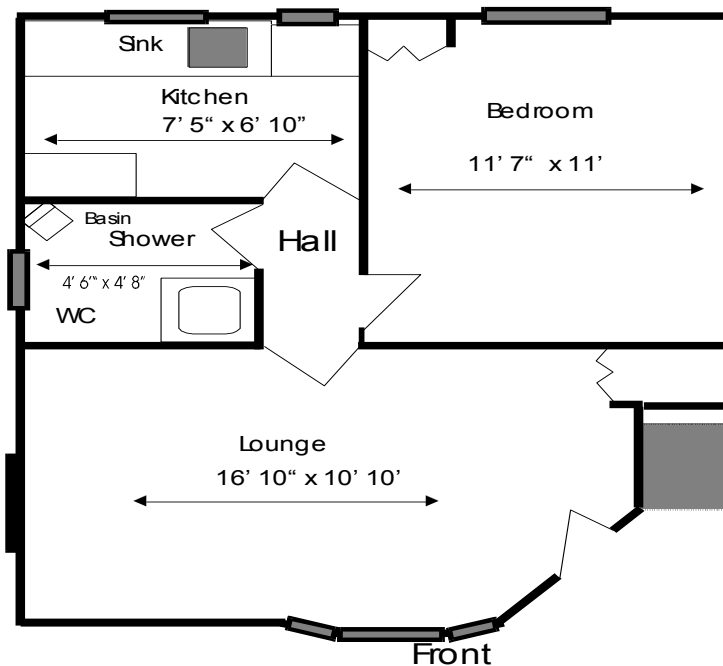
One Person One Bed Flat First Floor

# A Block of One Bedroom Flats within the Village

## Typical Floor Plan



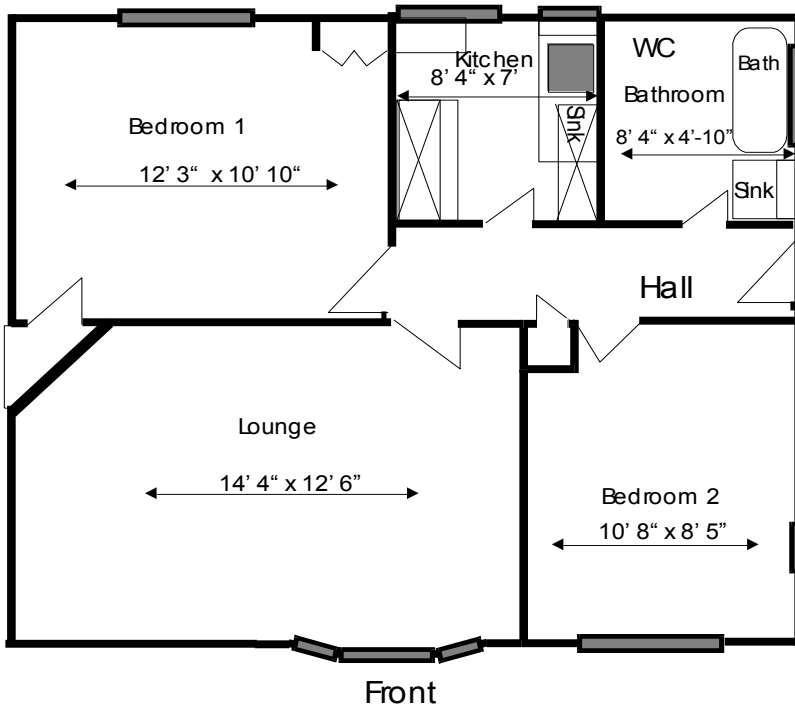
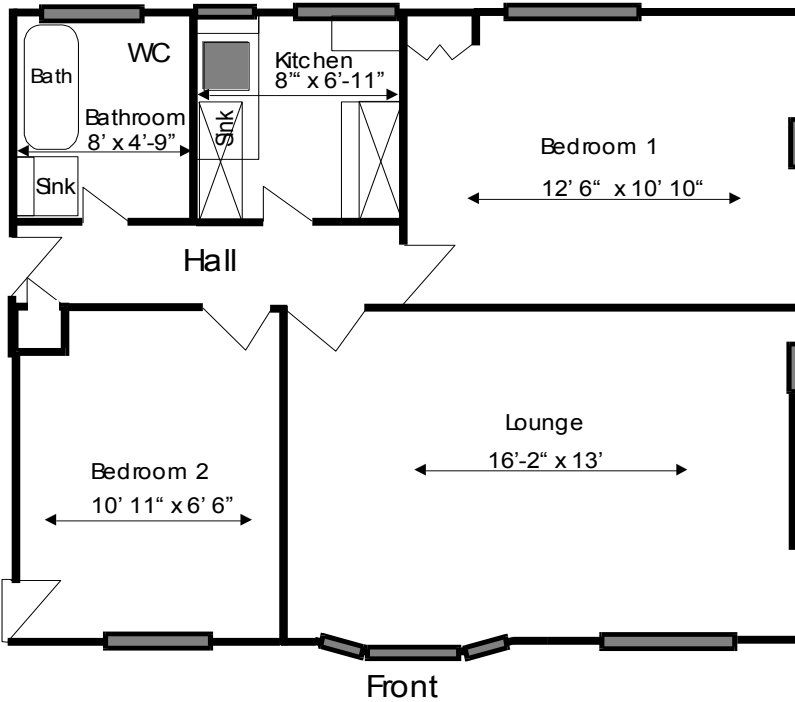
1 Bed First Floor



1 Bed Ground Floor

# A Block of Two Bedroom Flats within the Village

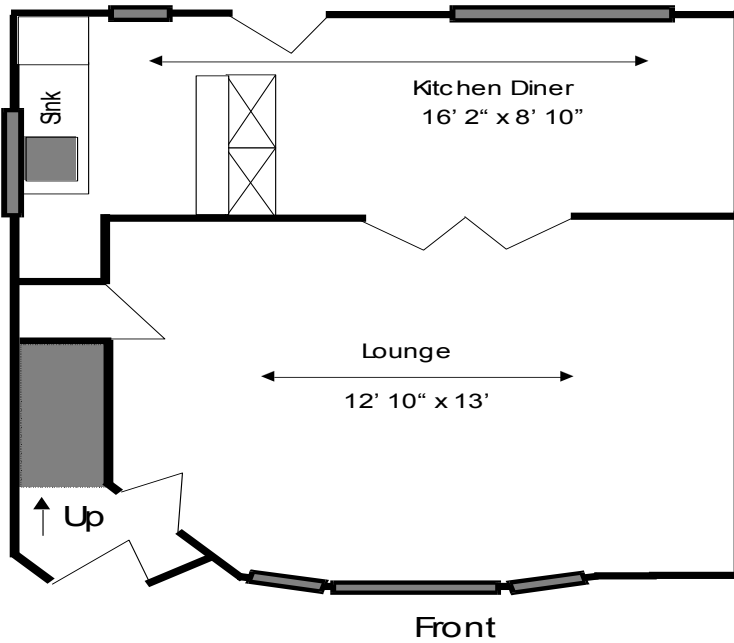
## Typical Floor Plan



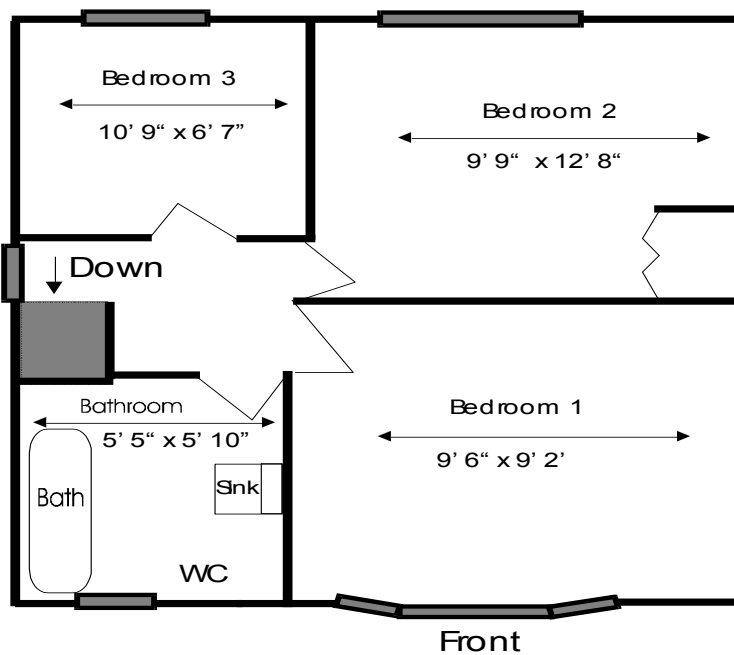


# A Three Bedroom House within the Village

## Typical Floor Plan of a Three Bedroom House



House Ground Floor



House First Floor

## **The Franklands Village Estate Office & Village Hall**



The Village Hall is available for hire - details can be obtained from the Estate Office.

A licensed Village Store is situated within the Village for the benefit of residents, offering a comprehensive range of groceries, newspaper, stationery .

## **The Franklands Village Store**





## **The Children's Play-Area**

The Hardy Memorial Field Trust created a play area for the benefit of local children - with equipment suitable for children up to 15 years old.

## **Playing Field**

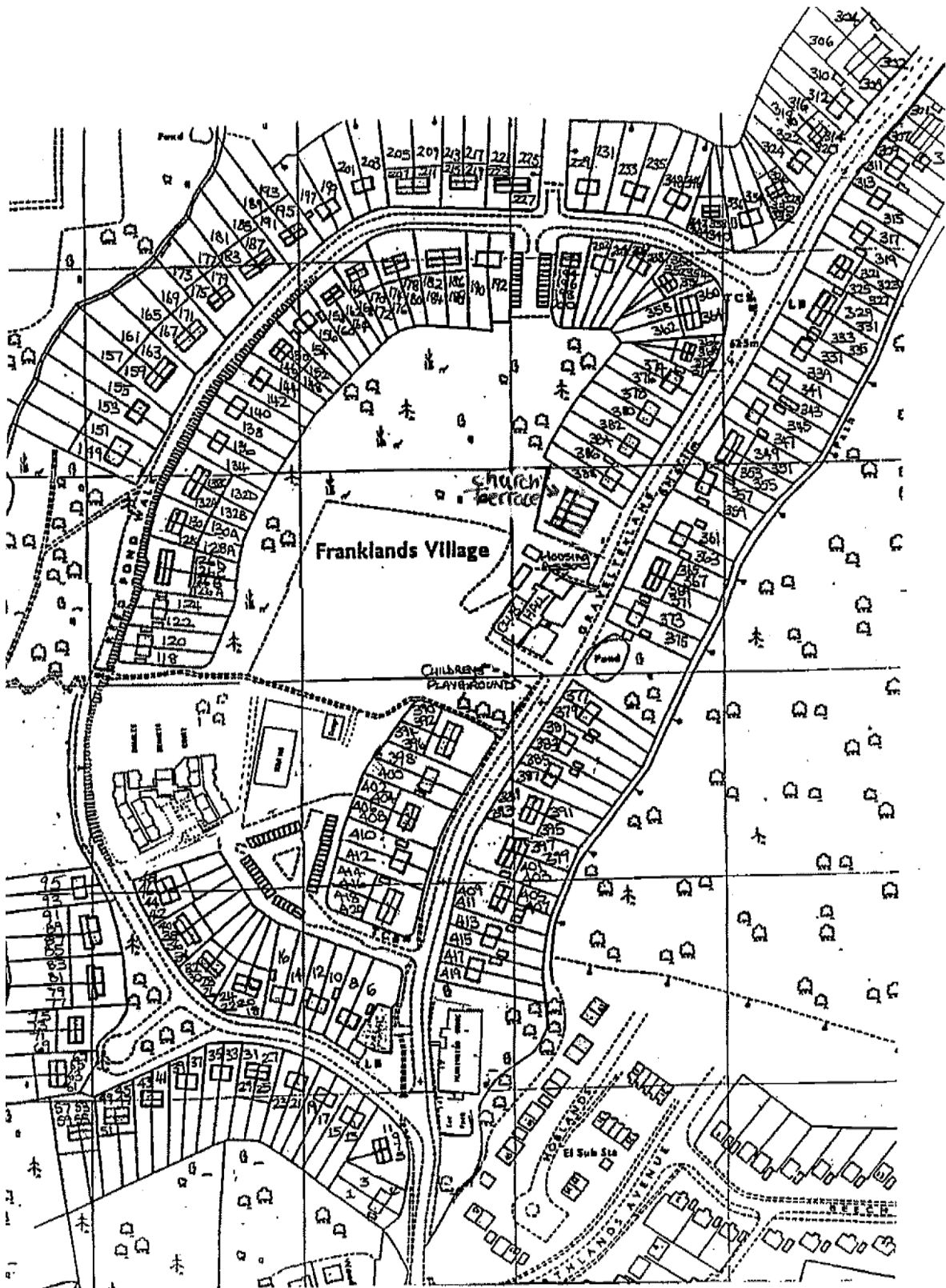
The playing field is there to be enjoyed by all. It is also used regularly throughout the football season by local football clubs. The field can be hired for events and details can be obtained from The Estate Office.



## **The Village Pond**

Directly opposite the club building is the village pond with several different types of fish and wild life. A good area to stop, sit and enjoy this peaceful setting of a village within a town.

# Franklands Village Layout Plan



## Useful Addresses and Telephone Numbers - Schools

<u>Junior Schools</u>	<u>Tel. No.</u>
Warden Park Primary Academy New England Road HAYWARDS HEATH	01444 451264
Northlands Wood Primary Academy Beech Hill HAYWARDS HEATH	01444 455653
St Josephs R C Primary School Hazelgrove Road HAYWARDS HEATH	01444 452584
St Wilfrid's C E School Eastern Road HAYWARDS HEATH	01444 413707

<u>Senior Schools</u>	<u>Tel. No.</u>
Oathall Community College Appledore Gardens HAYWARDS HEATH	01444 414001
St Paul's Catholic College Jane Murray Way Burgess Hill	01444 573898
Warden Park Secondary Academy Broad Street CUCKFIELD	01444 451264
Haywards Heath Sixth Form College Harlands Road HAYWARDS HEATH	01444 456281

### **Local Recreation facilities include:-**

#### **Beech Hurst [Telephone Mid Sussex Leisure - 01444 458166]:**

Offering Outdoor Bowls, Tennis Courts. Play Area, Model Railway and Pitch & Putt.

#### **Dolphin Leisure Centre - 01444 457337:**

Offering Squash Courts, 2 Swimming Pools, Badminton, Gymnasium, Sauna and Café Bar.

#### **Claire Hall - 01444 455440:**

Offering once a month cinema, and various theatre and music events throughout the year.  
Attached to this building is the local Age Concern Day Centre.

#### **Haywards Heath Library - 01444 454607:**

Situated in Boltro Road and offers a full library and internet service.

## **Useful Addresses and Telephone Numbers - Doctors & Dentists**

<b><u>Doctors</u></b>	<b><u>Tel. No.</u></b>
Dolphins Heath Road HAYWARDS HEATH	01444 414767
Lindfield Medical Centre High Street LINDFIELD	01444 484056
Northlands Wood Medical Practice 7 Walnut Park HAYWARDS HEATH	01444 458022
Cuckfield & Vale Road Medical Centre Glebe Road CUCKFIELD	01444 458738
<b><u>Dentists</u></b>	<b><u>Tel. No.</u></b>
Muster Dental Practice Pinewood House Muster Green North HAYWARDS HEATH	01444 412863
Gresham Dental Practice Butlers Green Road HAYWARDS HEATH	01444 455171
Haywards Heath Dental Clinic 55 Perrymount Road HAYWARDS HEATH	01444 450888
Heathcote House Dental Practice 7 Heath Road HAYWARDS HEATH	01444 412533
Ian J Pitman 49 Hazelgrove Road HAYWARDS HEATH	01444 458847 & 452112
Viggor & Associates 26 Haywards Road HAYWARDS HEATH	01444 440123

## **Useful Addresses and Telephone Numbers**

### **Citizens Advice Bureau**

Oaklands  
Paddockhall Road  
HAYWARDS HEATH  
West Sussex  
RH16 1HG

Tel: 03444 771171  
[www.adviceline.org.uk](http://www.adviceline.org.uk)

### **Haywards Heath Town Council**

Town Hall  
Boltro Road  
HAYWARDS HEATH  
West Sussex  
RH16 1BA

Tel: 01444 455694

### **Mid Sussex District Council**

Oaklands  
Oaklands Road  
HAYWARDS HEATH  
West Sussex  
RH16 1SS

Tel: 01444 458166  
email: [enquiries@midsussex.gov.uk](mailto:enquiries@midsussex.gov.uk)

### **Bus Coach & Rail Enquiries**

WSSC Traveline 0870 608 2608

### **Crimestoppers**

0800 555 111

### **RSPCA**

08705 555 999

### **Street Lighting**

Haywards Heath Town Council

01444 455694

### **Princess Royal Hospital**

Lewes Road  
HAYWARDS HEATH  
West Sussex  
RH16 4EX

Tel: 01444 441881

### **National Rail Enquiries**

08457 48 49 50